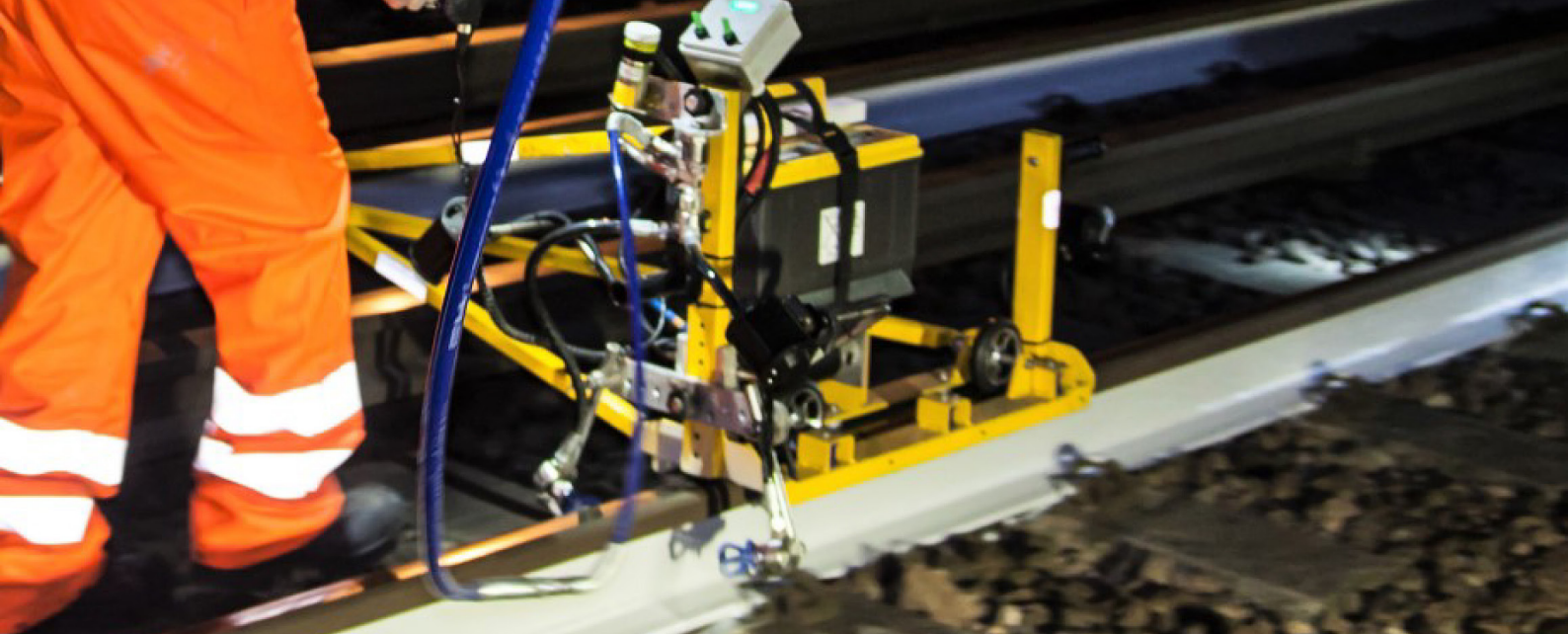




ANTI-BUCKLE COATING



Anti-buckle coating

A revolutionary single pass anti-buckling coating which insulates the rail and prevents reduction in train speeds.

A 30-year life span is expected. Even when the coat turns black the effect of insulating remains. Machine applied simple and quick many kilometres can be treated in one day.

A 2mm coating will insulate the rail from increasing temperatures.

Untreated rail is subjected to the following effects due to excess heat.

- Wear and tear
- Weathering
- Buckling
- Cracking

It is open to the effects of heat and cold which causes buckling which in turn starts a process of decline.

Economic Reasons.

- Longer rail life
- Longer train life.
- No loss in traffic volumes on the rail
- Time tables un-effected.



“Initial trials in Italy showed very positive results”

The rail loses shape and allows the train to bounce on the track albeit a small amount to start with but as the situation worsens the train begins to suffer and the ride becomes unpleasant and a reduction in speed is needed to combat the situation.

Now a corrugated surface is beginning to develop.

Rail grinding to smooth the surface back, is a short fix but one that is adopted throughout Europe.

The cost of this is unknown to us but one can imagine expensive.

A smooth ride is the desired outcome.

A method of treating rail for rust was first needed and a simple cleaning solution has been devised.

This is first applied so the substrate is ready to take the anti-buckling coat

Then the coating is applied to the rail which will last for 30 years.

The coating is applied to the web of the rail on both sides and a full track can be done in one pass.



Quietstone Works Nab Quarry Pott Shrigley Macclesfield Cheshire
SK10 5SD UK

www.quietstone.co.uk

info@quietstone.co.uk

Company registraion number: 07592216